

SONY

Hi-Fi Products
Service Bulletin

Sony Service Company Technical Services
A Division of Sony Corporation of America
Sony Drive, Park Ridge, New Jersey 07656

Model: CDP-510/910/505ESD

No. 25

Subject: Intermittent No Eject

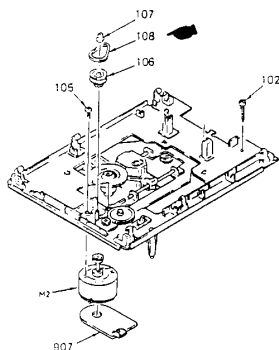
Date: July 29, 1988

Symptom:
(265)

Loading tray is intermittently not ejected.

Solution: Replace the driving belt with the new one as shown:

Model	Ref. No.	Description	Part Number	
			Former	New
CDP-510	108	Driving Belt	4-917-548-01	4-917-548-02
CDP-910	206	Driving Belt	4-917-548-01	4-917-548-02
CDP-505ESD	206	Driving Belt	4-917-548-01	4-917-548-02



Note: Diagram shown is for the CDP-510.

Reference: Fax

PRINTED IN U.S.A.
CSA-13788-3

Compact Disc

CSA-13